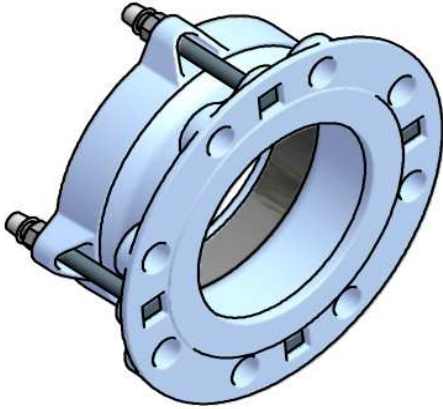
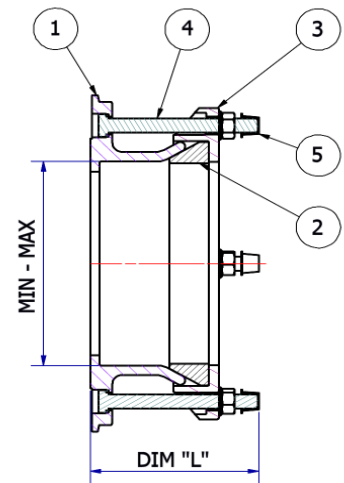


SIGMA - your fitting choice



S - Range Flange Adaptors



Suitable for tied restraint without modification

S Range - DIMENSIONS							
MODEL No.	DN	DRILLING	MIN O/D	MAX O/D	DIM "L"	No. BOLTS & SIZE	WGT (kg)
SF-50-1	50	PN10/16	60	66	125	2 X M12	3.5
SF-50-1	80	PN10/16	89	98	135	4 X M12	4.5
SF-100-1	100	PN10/16	108	118	135	4 X M12	5
SF-150-1	150	PN10/16	159	170	135	4 X M12	6.5
SF-200-1	200	PN16	219	225	135	6 X M12	11
SF-250-1	250	PN16	273	280	135	6 X M12	13
SF-300-1	300	PN16	315	326	135	6 X M12	15

Materials & Coatings

S Range FLANGE ADAPTOR - Parts List				
ITEM	QTY	DESCRIPTION	MATERIAL	SPECIFICATION
1	1	BODY CASTING	420/12 CAST S.G. IRON	WRAS APPROVED POWDER COATED
2	1	GASKET	EPDM ELASTOMER	WRAS APPROVED MATERIAL
3	1	END RING CASTING	420/12 CAST S.G. IRON	WRAS APPROVED POWDER COATED
4	4	M12 ADJUSTING BOLT	GRADE 8.8 STEEL	ZINC PLATED & BLACK PLASCOAT 80 MIC
5	4	THREAD CAP	NYLON MOULDING	NATURAL FINISH
6	4	HEXAGON NUT	ST. STEEL GRADE A4	NATURAL FINISH
7	4	WASHER	ST. STEEL GRADE A4	NATURAL FINISH